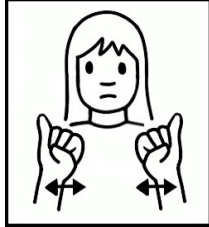


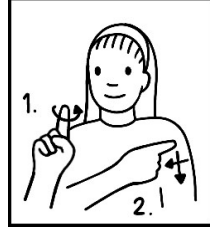
# Auslan Medical, Emergency & First Aid Signs



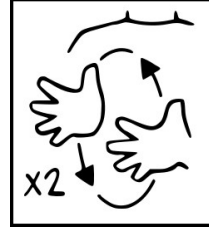
medicine



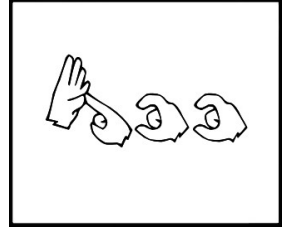
emergency



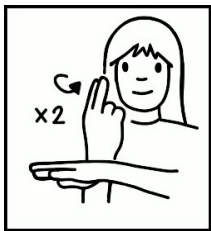
first aid



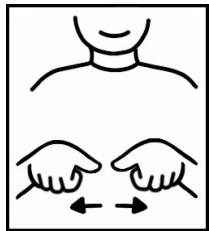
sign



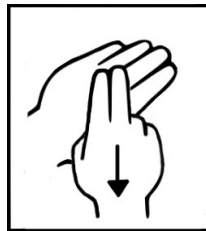
accident



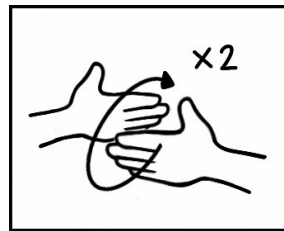
ambulance



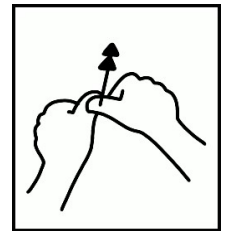
band-aid



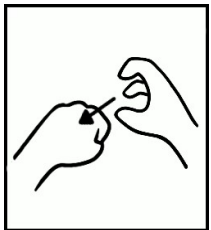
band-aid



bandage



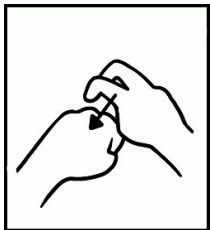
better



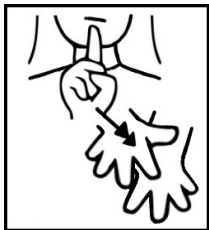
bite (dog)



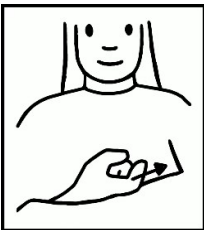
bite (insect)



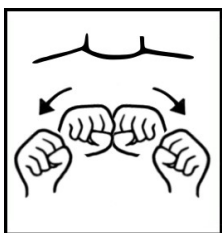
bite (snake)



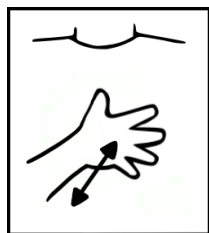
blood



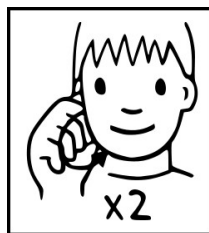
bone



break



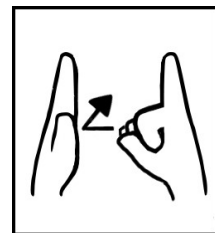
breath



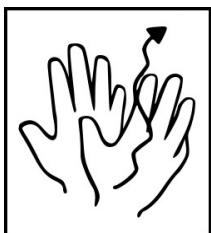
bruise



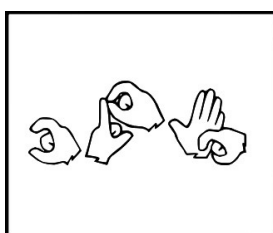
bump (head)



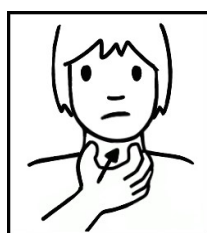
bump (into wall)



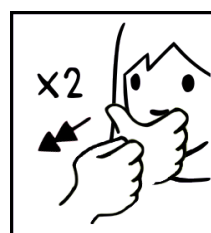
burn



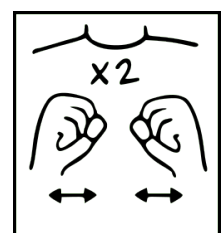
CPR



choke



cold (nose)



cold (feel)